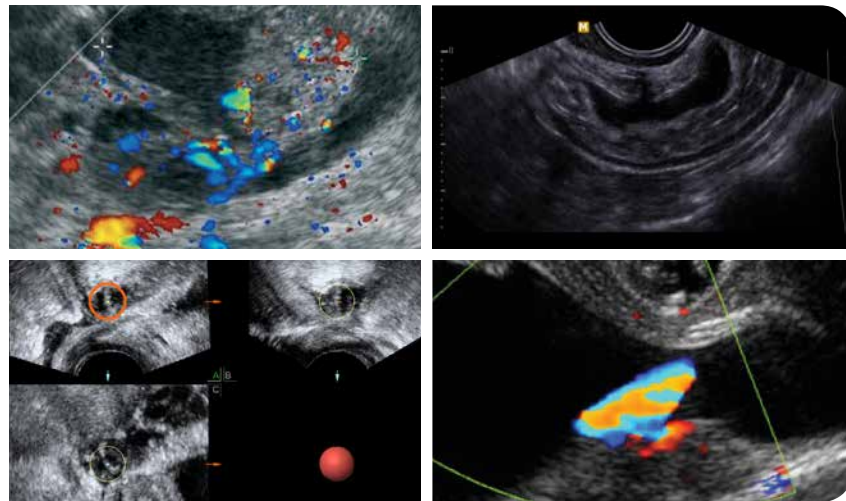


# ISUOG Education 2014



## Advanced interactive course: Early pregnancy scanning and sonovaginography to detect endometriosis

### Course directors:

*George Condous & Sophie Piessens (Australia)*

**14 - 15 June 2014**

**Novotel Sydney Central, Australia**

Following the success of ISUOG's recent pre-Congress course in Sydney, 2013 and in response to delegate feedback, we are pleased to offer this intensive course. Join us to explore the use of ultrasound in both the evaluation of early pregnancy complications and the detection of Deep Infiltrating Endometriosis (DIE).

This two day advanced course offers delegates interactive learning techniques, live scanning and the opportunity to share knowledge of key developments with expert researchers in the field.

**ISUOG member fee: \$355 AUD**

**Non-member fee: \$460 AUD**

*(includes 2014 ISUOG core membership)*

**CPD credits available**

### About ISUOG Education

ISUOG delivers quality education courses in Ultrasound in Obstetrics and Gynecology, providing up to date knowledge and clinical guidance for a range of topics and professional levels. Our courses are dynamic, interactive and provide delegates with practical skills as well as excellent networking opportunities.

### Previous ISUOG course delegates said:

*'Live scan demonstrations were very good.'*

*'Great tips and tricks, essential for examining patients'*

Visit [isuog.org/events](http://isuog.org/events) for a full list of upcoming events.

Register online at [isuog.org](http://isuog.org)

E: [congress@isuog.org](mailto:congress@isuog.org) T: +44 (0)20 7471 9955



# Course program

## Saturday 14 June 2014

### Ultrasound evaluation in Early Pregnancy complications

- 08:45 Welcome and introduction
- 09:00 Aberrant 1st trimester embryonic growth - what are the clinical implications?
- 09:30 Miscarriage: new international guidelines for the diagnosis
- 10:00 Miscarriage: the "two-week" rule and does power Doppler ultrasound assist in deciding the management?

10:30 Coffee break

### Ectopic pregnancy

- 11:00 Tubal ectopic pregnancy: diagnosis and management
- 11:45 Ectopic pregnancy case conundrums

12:15 Lunch

### Non-tubal ectopic pregnancy and pregnancies of unknown location

- 13:15 Non-tubal ectopic pregnancy: ultrasound diagnosis  
Caesarean section scar pregnancy – transrectal guided D&C
- 13:45 Pregnancies of unknown location (PULs): what does it mean and what do we do?  
Why are some ectopic pregnancies classified as PULs?
- 14:15 Stratifying risk for women classified with a pregnancy of unknown location (PUL)

14:45 Coffee break

### Training your eye

- 15:15 Interactive session – ectopic pregnancy/PUL case videos

16:15 Close

## Sunday 15 June 2014

### Ultrasound evaluation in Early Pregnancy complications

08:45 Welcome

08:50 Patient testimonial

### Understanding endometriosis and its surgical challenges

- 09:00 Endometriosis in all its shapes and forms as seen through the laparoscope
- 09:20 Why preoperative diagnosis of DIE improves patient outcomes
- 09:40 The significance of POD obliteration at laparoscopy

### The Ultrasound diagnosis of DIE

10:00 How to do a detailed scan for endometriosis?

10:30 Coffee break

- 11:00 How to assess the anterior and lateral compartments (bladder, ureters)
- 11:15 Assessing the uterosacral ligaments
- 11:30 The use of soft markers as part of the routine assessment of the pelvis in women with suspected endometriosis
- 11:45 Live scanning

12:30 Lunch break

### Adjuncts to scanning

- 13:30 Can we predict pouch of Douglas obliteration using ultrasound and does experience influence the prediction of pouch of Douglas obliteration?
- 14:00 "Stand-off" techniques for the prediction of DIE
- 14:30 Domain approach to assessing the pelvis in woman with potential endometriosis – levels I – V
- 15:00 Live scanning to demonstrate Sonovaginography and POD 'sliding sign'

15:30 Coffee break

### Training your eye

- 16:00 Bowel nodules – cases
- 16:30 POD obliteration and stand-off techniques - cases
- 17:00 Ultrasonographic red flags which help in the diagnosis of endometriosis

17:30 Close

Register online at [isuog.org](http://isuog.org)

E: [congress@isuog.org](mailto:congress@isuog.org) T: +44 (0)20 7471 9955