

## **Saline Infusion Sonohysterography (SIS)**

What are the common reasons for having this examination?

- Heavy periods or bleeding between the periods or bleeding after the menopause
- Suspected abnormalities of the uterus - either ones you were born with or new ones; e.g. fibroids or endometrial polyps.
- Further evaluation of abnormalities seen on transvaginal scan e.g. in women receiving tamoxifen therapy for breast cancer
- Investigation of sub-fertility and recurrent miscarriages
- If the lining of the uterus was not able to be seen clearly on routine scanning

You should not have the procedure if you are pregnant or may be pregnant at the time of the examination or you have acute pelvic infection or unexplained pelvic tenderness which may be due to pelvic inflammatory disease. SIS is best performed in the first 12 days of the menstrual cycle.

SIS is used to detect abnormalities of the endometrium (“lining of the womb”). Essentially a small amount of fluid is injected into the uterus through a fine tube to outline the uterine cavity.

## **Will I need an anaesthetic?**

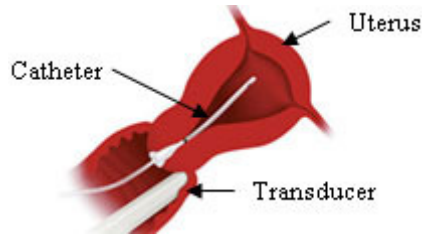
No; this procedure is performed in the outpatient clinic at OMNI. Whilst you may experience some mild discomfort, this is not a painful procedure. You should take two tablets of the pain relief you would normally take for a headache 1 hour prior to the SIS.

## **What preparation is required for these procedures?**

The procedure is performed in the first 12 days of the menstrual cycle, i.e. within 12 days of the commencement of your period. If you have irregular or infrequent periods the timing should be discussed with the team at OMNI prior to making a formal booking.

In general it is not necessary to take antibiotics before the procedure but these may need to be considered in rare circumstances.

## How is the procedure performed?



You will need to empty your bladder before the SIS. On the day of the procedure a transvaginal ultrasound of the pelvis will be performed immediately prior to the procedure. For the procedure itself your legs will be placed in stirrups (the lithotomy position) and a vaginal speculum will be placed in the vagina. The cervix will be cleaned with antiseptic solution and a fine (2 mm) plastic tube passed through the cervix into the uterus. A small balloon on the catheter is inflated to keep the catheter in place. The speculum is removed and a transvaginal ultrasound scan is then performed as the saline is injected. You will be advised of the findings as the procedure is performed.

A half hour appointment is required for the procedure.

## Will I need analgesia after the procedure?

You may experience lower abdominal cramps for the first 12 - 24 hours. Simple analgesia may be required following the procedure.

Should you have any further questions please do not hesitate to call the rooms on 1300 851 968.

